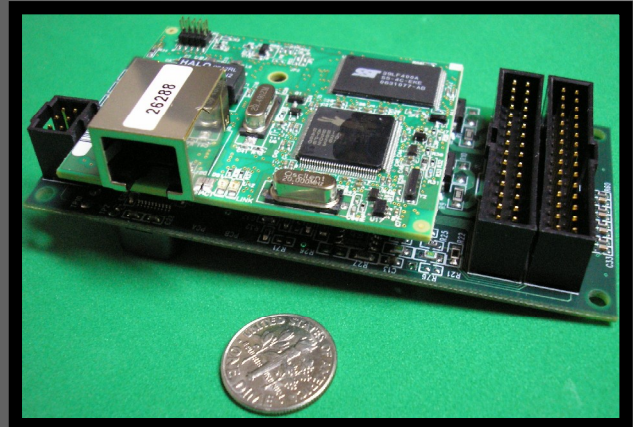


"MFI": MultiFunction Interface Control Module

Perfect for industrial and robotic embedded control applications

- Compact size
- Wide operating voltage
- Expandable Ethernet support
- Turn-key Internet control with HTTP, FTP, SNMP, etc.
- Supports common features in industrial and robotic applications: digital I/O, A/D, D/A, RS-232, quadrature decode



Power and Mechanical

Voltage supply: $V_{in} = 6V - 36V // 2.3W$ typical unloaded (e.g. 96mA @ 24VDC)

V_{in} and 5VDC (1.5A) available at connectors for system-wide distribution

Molex "C-Grid III" connectors (dual-row)

Dimensions: 4.00"L x 1.84"W x 1.26"H

Microprocessor

Rabbit® Core Module RCM4200

8 MB serial flash for mass data storage; 512K flash/512K SRAM

Rabbit Dynamic C® v10.x libraries and drivers provided

Communication

Ethernet: 10/100BASE-T

Two (2) RS-232 serial ports available

Digital

Eight (8) digital outputs (2.5A/60V sink/source solid-state relays)

Eight (8) digital inputs, 5V-compatible

Two (2) quadrature decoder channels, 5V-compatible

Analog

Eight (8) analog-to-digital (A/D) channels

Accepts 4-20mA input, with analog low-pass filter (adjustable 50-200Hz)

Two (2) channels of PWM outputs at 3.3V levels, with optional 0-10VDC

**For more information or to order, please visit:
www.sdsciences.com**